



# ERTIGA 1.5L GLX 7P 4X2 BVA ESS











Vue de face



Vue de profil

A close-up photograph of a black, rectangular rearview camera mounted on the rear bumper of a light-colored car. The camera lens is visible in the center. A semi-transparent watermark with the text 'MOTORLAND' and a stylized 'M' logo is overlaid on the image.

MOTORLAND

Caméra de recul



Poignée à clé + Bouton de verrouillage/déverrouillage centralisé



ML MOTORLAND

Rétroviseurs avec clignotants



Roues alliage 185/65R15

A close-up photograph of the front left corner of a silver car. The image shows the headlight assembly with two main circular lenses, the chrome-trimmed grille with a diamond pattern, and the front bumper with a fog light. The car is parked on a gravel surface.

**MOTORLAND**

**Phares halogènes**



Lèves-vitre électriques



Contrôle de stabilité + capteurs de stationnement

ML MOTORLAND

Bouton d'ouverture réservoir

A close-up photograph of a car's interior climate control air outlet. The unit is black with a textured surface. It features a central horizontal slider and several control buttons on the right side. On the left, there is a small rectangular vent with a grid pattern and a square button with an 'X' symbol. A watermark with the letters 'ML' inside a stylized 'M' and the word 'MOTORLAND' is overlaid in the center of the image.

M MOTORLAND

Sortie d'air climatisation



Sortie d'air climatisation



Réglage clignotant + Phare



Réglage essuie-glace

MOTORLAND  
12V  
120W

USB

Prise 12V + Port USB

MOTORLAND  
ENGINE  
START  
STOP

Bouton de démarrage START & STOP



Eclairage interne



Systeme climatisation



Tableau de bord



Ecran tactile 7 pouces



Volant cuir multi-fonctions



Tableau de bord

ML MOTORLAND



Prise 12V

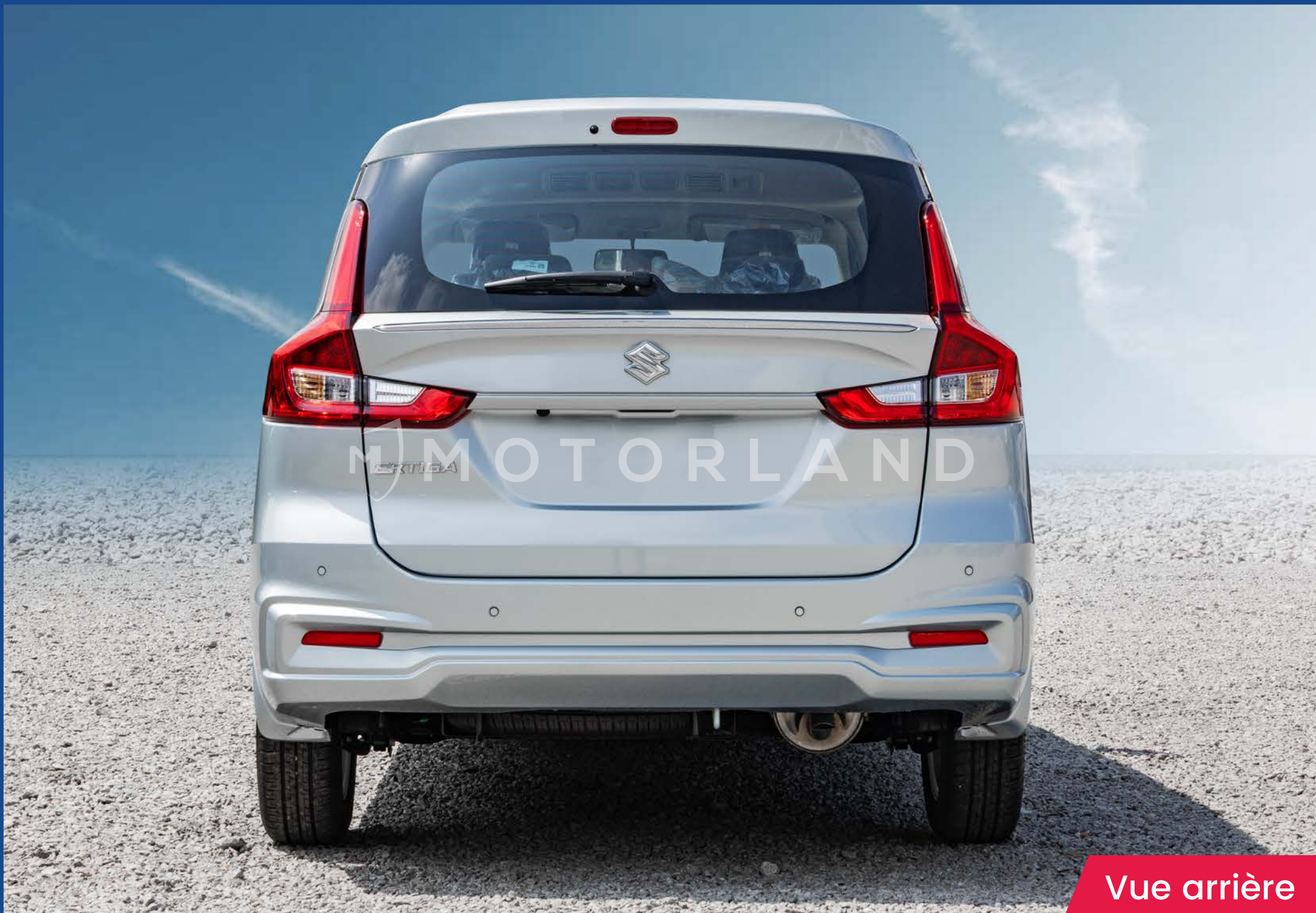


MOTORLAND

Siège tissu



Siège tissu



Vue arrière